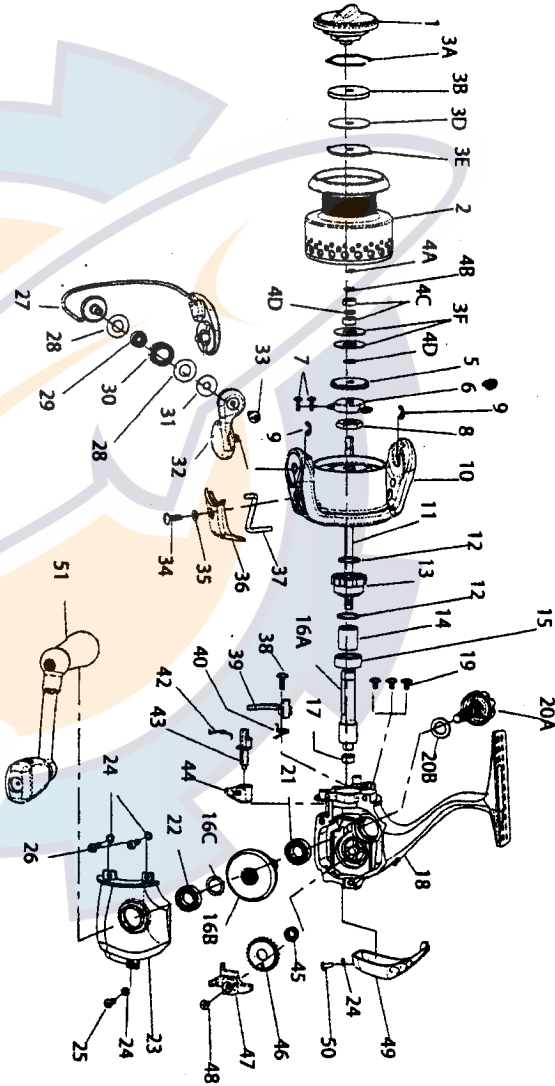


# Exploded View For parts and service, call: 1-800-588-9000

## ENERGY 20PTI - EXPLODED



QTY	DESCRIPTION	REF. NO.	QTY	DESCRIPTION	REF. NO.
1	DRAG KNOB ASSEMBLY	PT332-10	Q1332-01	RT332-01	RT332-01
2	SPOOL ASSEMBLY KIT	PT4321-01	Q14321-01	RT4321-01	RT4321-01
3	DRAG WASHER KIT	PT4381-01	Q14381-01	RT4381-01	RT4381-01
3A	DRAG WASHER CERAMIC	N/A	N/A	N/A	N/A
3B	DRAG WASHER KEVEY TO SPOOL	N/A	N/A	N/A	N/A
3C	DRAG WASHER KEVEY TO MAIN SHFT	N/A	N/A	N/A	N/A
3D	DRAG WASHER KEVEY TO SPOOL	N/A	N/A	N/A	N/A
3E	DRAG WASHER KEVEY TO SPOOL	N/A	N/A	N/A	N/A
4	SPOOL BEARING KIT	PT4371-01	Q14371-01	RT4371-01	RT4371-01
4A	SPOOL BEARING 'A'	Q112	Q112	Q112	Q112
4B	SPOOL BEARING WASHER 'B'	N/A	Q112	Q112	Q112
4C	SPOOL BEARING WASHER 'B'	N/A	Q112	Q112	Q112
5	CLICK GEAR	RQ037-01	RQ037-01	RQ037-01	RQ037-01
6	MAIN SHAFT BUSHING	RQ214-01	RQ214-01	RQ214-01	RQ214-01
7	ROTOR NUT LOCK SCREW	RQ094-01	RQ094-01	RQ094-01	RQ094-01
8	ROTOR NUT	SH008-01	SH008-01	TH008-01	TH008-01
9	E-CLIP	GH034-01	GH034-01	GH034-01	GH034-01
10	ROTOR ASSEMBLY	PQ309-55	SO309-55	SO309-55	SO309-55
11	MAIN SHAFT	PT015-01	Q1015-01	RT015-01	RT015-01
12	CLUTCH WASHER	RQ167-01	RQ167-01	RQ167-01	RQ167-01
13	CLUTCH ASSEMBLY	SO390-01	SO390-01	SO390-01	SO390-01
14	CLUTCH SLEAVE	RQ139-01	RQ139-01	SO138-01	SO138-01
15	PINION BALL BEARING	CH028-10	SH028-01	UN028-01	UN028-01
16	GEAR ASSEMBLY KIT	PT4011-01	Q14011-01	RT4011-01	RT4011-01
16A	PINION	N/A	N/A	N/A	N/A
16B	DRIVE GEAR ASSEMBLY	N/A	N/A	N/A	N/A
17	PINION BUSHING	PQ141-01	RQ141-01	SO141-01	SO141-01
18	BODY	PT001-01	Q1001-01	RT001-01	RT001-01
19	BEARING SCREW	RQ141-01	RQ141-01	RQ141-01	RQ141-01

QTY	DESCRIPTION	REF. NO.	QTY	DESCRIPTION	REF. NO.
20	HANDLE CAP SCREW KIT	RQ073-01	AT073-03	AT073-03	AT073-03
20A	HANDLE CAP SCREW	RQ073-01	AT073-03	AT073-03	AT073-03
21	20B-HANDLE SCREW WASHER	TH105-01	TH105-01	TH105-01	TH105-01
22	GEAR SHAFT BALL BEARING	CH028-01	CH028-01	BL157-01	BL157-01
23	BODY COVER	PQ023-55	RQ023-55	SO023-55	SO023-55
24	BODY COVER SCREW WASHER	RQ142-01	RQ142-01	RQ142-01	RQ142-01
25	BODY COVER SCREW	SO057-01	RQ057-01	SO057-01	SO057-01
26	BODY COVER SCREW	PQ034-51	RQ034-51	SO034-51	SO034-51
27	LINE ROLLER BALL BEARING	GH102-01	GH102-01	DH102-01	DH102-01
28	LINE ROLLER WASHER	GH004-51	GH004-51	GH004-51	GH004-51
29	LINE ROLLER BALL BEARING	PQ102-01	CH102-01	CH102-01	CH102-01
30	LINE ROLLER COLLAR	PQ307-01	RQ307-01	SO307-01	SO307-01
31	LINE ROLLER ASSEMBLY	AG108-07	AG108-07	AG108-07	AG108-07
32	LINE SLIDER SCREW	GU077-15	GU077-15	GU077-15	GU077-15
33	ARM LEVER COVER SCREW	SO142-01	SO142-01	SO142-01	SO142-01
34	ARM LEVER COVER WASHER	PQ087-01	RQ087-01	SO087-01	SO087-01
35	ARM LEVER COVER	PQ019-01	RQ019-01	SO019-01	SO019-01
36	ARM LEVER COVER	RQ019-01	RQ019-01	SO019-01	SO019-01
37	KICK LEVER	RQ071-01	RQ071-01	SO071-01	SO071-01
38	ANTI-REVERSE PAWL SCREW	PQ061-01	RQ061-01	SO061-01	SO061-01
39	ANTI-REVERSE PAWL SPRING	PQ061-01	RQ061-01	SO061-01	SO061-01
40	ANTI-REVERSE PAWL	PQ061-01	RQ061-01	SO061-01	SO061-01
41	ANTI-REVERSE CAM SPRING SCREW	PQ062-01	RQ062-01	SO062-01	SO062-01
42	ANTI-REVERSE CAM	PQ062-01	RQ062-01	SO062-01	SO062-01
43	ANTI-REVERSE LEVER	PT099-01	Q1099-01	RT099-01	RT099-01
44	ANTI-REVERSE LEVER	RQ059-01	RQ059-01	RQ059-01	RQ059-01
45	O/S GEAR BALL BEARING	EH158-01	EH158-01	EH158-01	EH158-01
46	OSCILLATOR GEAR	PQ053-51	RQ053-51	SO053-51	SO053-51
47	OSCILLATOR SLIDER	PQ025-01	RQ025-01	SO025-01	SO025-01
48	MAIN SHAFT SCREW	PQ015-01	RQ015-01	SO140-55	SO140-55
49	BODY BEAR COVER	PQ140-55	RQ062-02	SO140-55	SO140-55
50	BODY BEAR COVER SCREW	RQ062-02	RQ062-02	RQ062-02	RQ062-02
51	HANDLE ASSEMBLY	PT318-51	Q1318-51	RT318-51	RT318-51